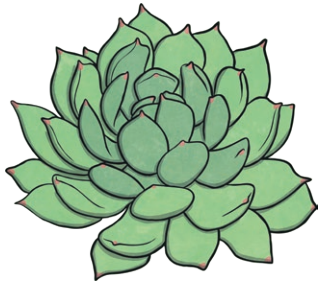
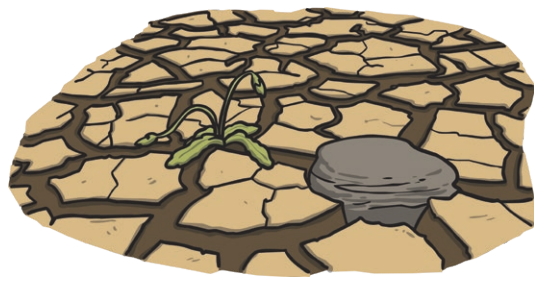


# Desert Plant Adaptations



Plants called succulents store water in their stems and leaves.



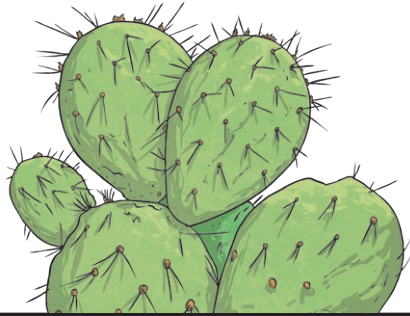
Some plants live for only a short time so that they can avoid drought.



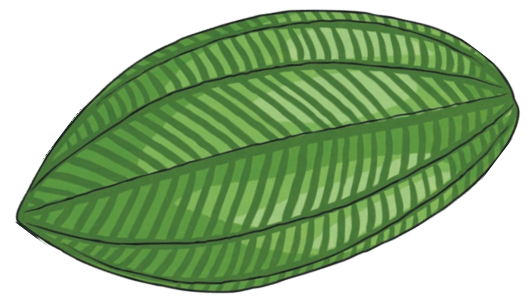
Growing slowly requires the plant to make less food, therefore they don't lose as much water.



Long roots go deep into the ground and spread out to absorb more water.



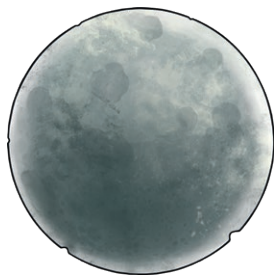
Spines or thorns on plants make it difficult for animals to eat them.



A waxy coating on leaves and stems help to reduce water loss.



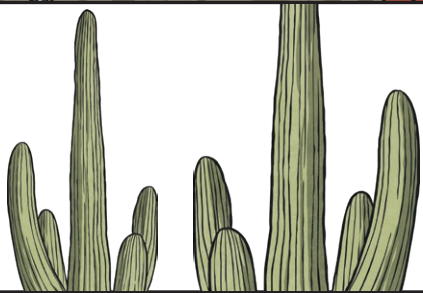
Some plants have no leaves or only small leaves that grow after it rains. The lack of leaves helps with water loss.



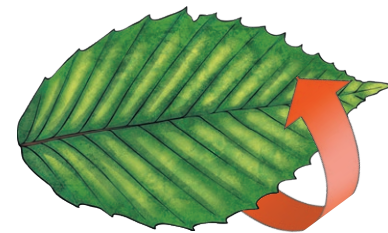
Flowers that open during the night attract pollinators that are more active when it is cool.



Leaves with hair help reduce the amount of water lost. Lightly coloured hair helps to reflect the sun's heat and shade a plant.



Plants without leaves photosynthesize in their stems.



Some plants have leaves that turn so that they can avoid having too much heat on them.